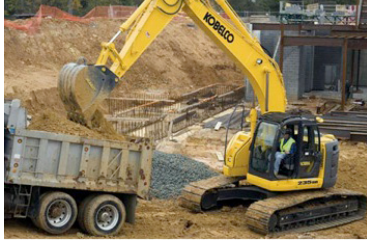




Inland Marine



Our inland marine team provides comprehensive coverage offerings, seasoned underwriting knowledge and market-leading claims services to complement the needs of our customers.

Features & Benefits

- Comprehensive coverage for a wide variety of risks including trucking and logistics, contractor's tools and equipment, installation and builder's risks (general contractors, artesian contractors, building owners and real estate developers, municipalities, fabricators), property (office buildings, repair bays and facilities, warehouses and terminals, ancillary property, including tool sheds, etc.), mobile electronic devices and miscellaneous articles (rolling stock, mobile electronic equipment, scheduled articles, mobile medical equipment)
- Flexible programs, tailored to our clients' needs
- Our own in-house claims and loss control engineers who have been addressing inland marine risks for years and can provide aid in the form of loss prevention techniques and loss mitigation for our customers

Coverage

- Available limits of up to \$15 million for U.S. domestic risks
- Admitted paper – New Hampshire Insurance Company
- Related building and personal property coverage available in conjunction with inland marine coverage
- Broad array of coverage forms available



Inland Marine

Loss Control, Engineering and Claims Services

Expert focus is given to helping insureds prevent losses and mitigate those that do occur. Services include:

Marine Loss Control Engineering (MLCE)

More than a dozen experienced loss control professionals spanning all time zones help policyholders reduce trade and transportation risks and minimize costly delays. Our comprehensive loss control services are based on three core principles:

- Proactive loss prevention – Helping clients avoid losses by analyzing potential exposures and minimizing them
- Reactive loss control – Helping clients prevent future losses by analyzing historical loss frequency and severity trends and acting to address vulnerabilities
- Communication – Maintaining open communication between policyholders and loss control professionals to enhance loss prevention efforts

Policyholders can also take advantage of the expertise of our independent surveyors and loss control experts who specialize in infrastructure projects, cargo, towing, heavy-lift, logistics and warehousing.

Claims Services

Our claims operations are staffed with marine and inland marine specialists, whose knowledge of both marine insurance law and property insurance enables us to resolve claims quickly and maximize recoveries, delivering tremendous benefit to our customers.

Comprehensive Recovery Support

Recoveries are central to our approach to claims. We have local and regional recovery specialists who focus on achieving maximum recovery on every claim. Such efforts help insureds maintain a favorable loss experience and keep premiums down.

Contact: www.aig.com/us/marine



Bring on tomorrow

American International Group, Inc. (AIG) is a leading international insurance organization serving customers in more than 130 countries and jurisdictions. AIG companies serve commercial, institutional, and individual customers through one of the most extensive worldwide property-casualty networks of any insurer. In addition, AIG companies are leading providers of life insurance and retirement services in the United States. AIG common stock is listed on the New York Stock Exchange and the Tokyo Stock Exchange.

AIG is the marketing name for the worldwide property-casualty, life and retirement, and general insurance operations of American International Group, Inc. For additional information, please visit our website at www.aig.com. Products and services are written or provided by subsidiaries or affiliates of American International Group, Inc. Not all products and services are available in every jurisdiction, and insurance coverage is governed by actual policy language. Certain products and services may be provided by independent third parties. Insurance products may be distributed through affiliated or unaffiliated entities. Certain property-casualty coverages may be provided by a surplus lines insurer. Surplus lines insurers do not generally participate in state guaranty funds and insureds are therefore not protected by such funds.